

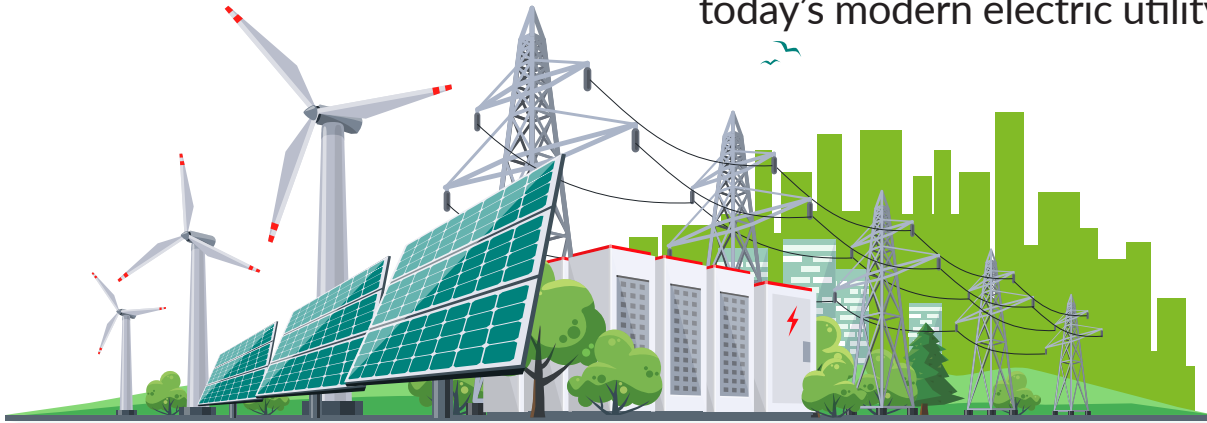


ALWAYS ON, ALWAYS CONNECTED

Resilience and reliability that
allow the grid to sense and respond in
real-time to localized changes

LEVERAGE TECHNOLOGY

With the very recent development of new spectrum opportunities including CBRS Band 48, Anterix Band US9i, and others there is tremendous opportunity to leverage technology like never in the history of wireless to take advantage of both public and private spectrum. This new class of intelligent LTE enabled gateways, coupled with exceptionally reliable private and public network communications, is enabling significant improvements in the performance and resilience of today's modern electric utility grid.



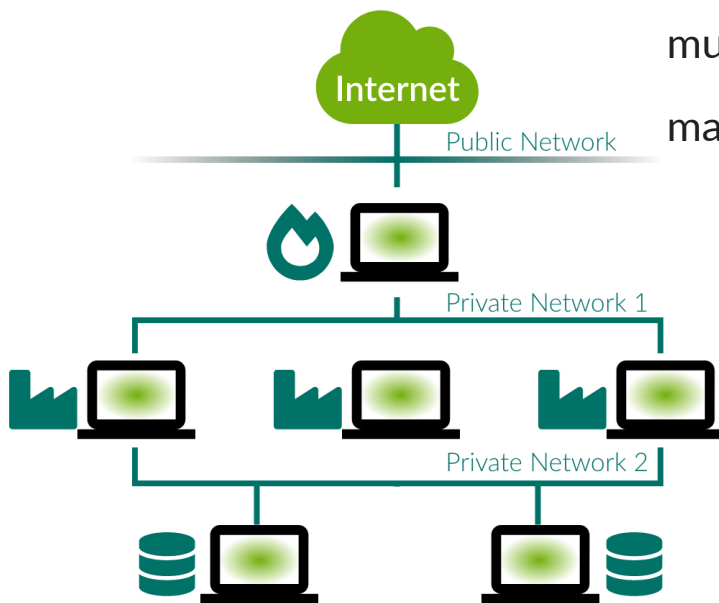
RESILIENCE AND RELIABILITY

These devices leverage new capabilities such as automatic network failover and multiple LTE radio “*always on*” “*always connected*” resilience and reliability that allow the grid to sense and respond in real-time to localized changes in the grid. This network appliance also leverages new rules-based technology to dynamically route traffic across different networks based upon use case requirements for latency, bandwidth, reliability, and security.



EDGE DEVICES

Utilities can deploy smart ***always on - always connected*** edge technology that leverages both public and private networks to usher in a new era of ultra-high reliability use cases. A modular technology approach allows mix and match of standards-based technologies in support of multi network diversity, multi network redundancy, automatic failover, and multiple active LTE radios in the same smart edge device for maximum throughput and redundancy.



A MODULAR APPROACH

This same technology also makes it easy and very cost effective to deploy on available public networks today and add or migrate to a private LTE network like Anterix Band US9i tomorrow.

EASY AND VERY COST EFFECTIVE TO DEPLOY



- Network diversity
- Multi network redundancy
- Automatic failover
- Multiple active LTE radios



THE FUTURE IS NOW

This new class of Smart DA gateway, based on a powerful edge computing hardware and software platform, coupled with Private LTE, CBRS, FirstNet, and public carrier communications promises to be a game changer. No longer are utilities tied to a proprietary technology or device in support of a single network and/or single use case.

Learn more about the new
TELiG E1500 LTE enabled Edge router
by Council Rock



To learn more about this technology and the many benefits please [visit our web](#) site or contact Todd Owen from Council Rock at towen@councilrock.com.

